

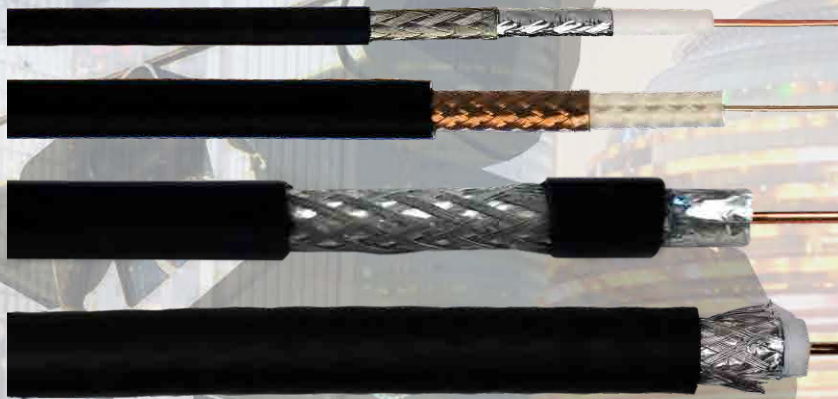
# 18003 | Selecting the right cable for CCTV & Surveillance System

Coaxial cable:

<http://www.zion-communication.com/CCTV-Coaxial-Cable.html>

We should select the required video coaxial cable based on the scene environment and transmission distance, for example:

Far transmission distance can using fiber optic cable to transmit.



In the process of transmitting video signals, video coaxial cable will cause the signal attenuation in the transmission process because of the cable material, specifications, transmission distance, environmental interference and other factors, 64 series transmission distance is 150M, 96 series transmission distance is 300M, 128 series transmission distance is 380 meters, 144 series transmission distance is 500 meters.

When using video coaxial cable, we must use video coaxial cable in line with national standards and regulations.

Control cable:

<http://www.zion-communication.com/Power-and-Control-Cables.html>

1, Please select the required RS485 control cable according to the site environment and transmission distance to ,if far transmission

2, RS485 control cable will cause the signal attenuation in the transmission process because of the cable material, specifications, baud rate, transmission distance, connection, environmental interference and other factors.distance then can using fiber optic cable to transmit.



Power cable:

<http://www.zion-communication.com/Power-and-Control-Cables.html>

When the power line transmit DC low voltage, the monitoring camera will cause the voltage drop because of the cable material, specifications, cable resistance, transmission distance and other factors, so the monitoring camera power supply is insufficient, then cause the surveillance camera can not work properly;



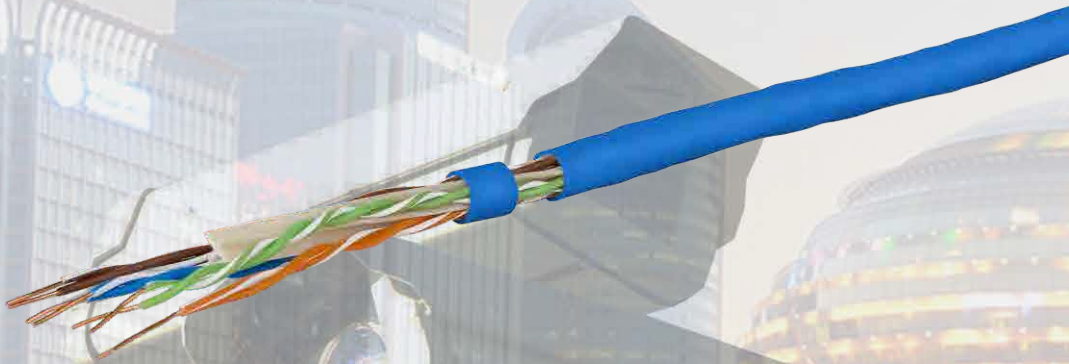
0.75mm<sup>2</sup> power line of the power supply distance is 20 meters,  
1.0mm<sup>2</sup> power line of the power supply distance is 25 meters,  
1.5mm<sup>2</sup> power line of the Power supply distance is 35 meters,  
2.0mm<sup>2</sup> power line of the power supply distance is 45 meters,  
2.5mm<sup>2</sup> power line of the power supply distance is 55 meters,

When installing the power cable in the surveillance camera, select the corresponding power cord according to the parameters shown above to ensure that the surveillance camera can get enough power to work properly.

Network cable:

<http://www.zion-communication.com/Network-IP-Cable.html>


1, If the surveillance camera upgrade to the network digital machine, need to use cat5e eight-core twisted pair network cable to transmit the digital signal of dome camera;





2, In the transmission process, the network cable will affect the transmission distance because of the cable material, specifications, environmental interference and other reasons, in theory, the transmission distance of the super-five network lines can reach 100 meters(When the distance is more than 60 meters, recommend to use cat5e network cable with shielding layer);

3, when the need to transfer the distance beyond the actual maximum transmission distance of the network cable, use the switch relay or switch to fiber transmission.

Welcome to contact us

 Tel : +86 571 63804414

 info@zion-communication.com

 NO.68,HuaQiao ROAD, JinCheng Street,  
LinAn,ZheJiang,China 311300